

Appendix II-32: Tunisia - 1:25 000 mapping

Topographic Maps in 1:100.000 scale



Metadata:
 Ellipsoid: Clarke 1880 / WGS1984
 Projection: Universal Transverse
 Mercator "UTM".
 Source: Aerial photography 1984 Scale
 1/80 000 and completed field 1993.

Appendix II-33: Tunisia - 1:100 000

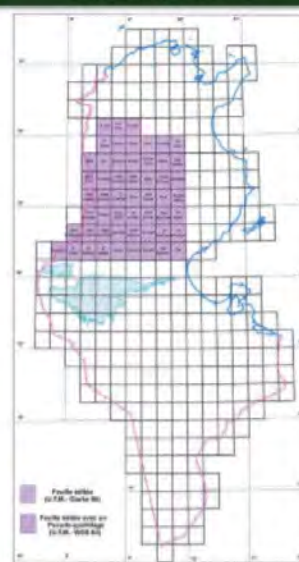
Topographic Maps in 1:50.000 scale

Ancien Type Lambert Clarke 1880



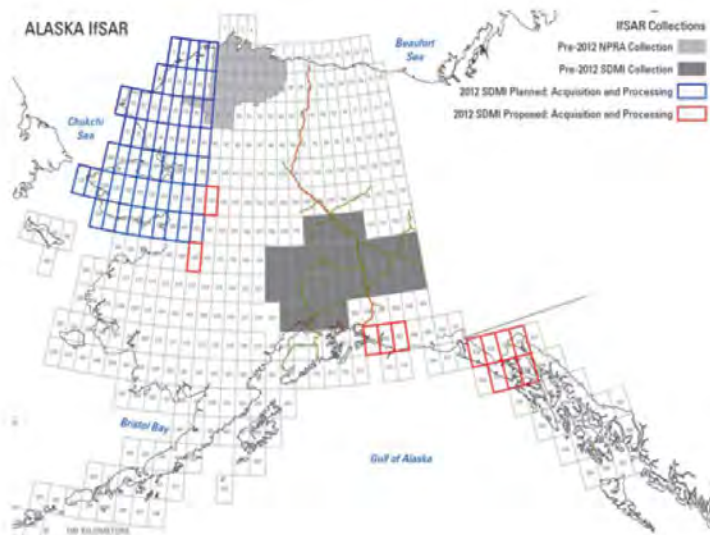
Metadata:
 Projection : Lambert (deux zones)
 Ellipsoïde : Clarke 1880.
 Origin: Grade (Paris)
 Degrees (Greenwich).
 Nickname Grid UTM - WGS 1984
 UTM - WGS 1984

UTM Clarke 1880

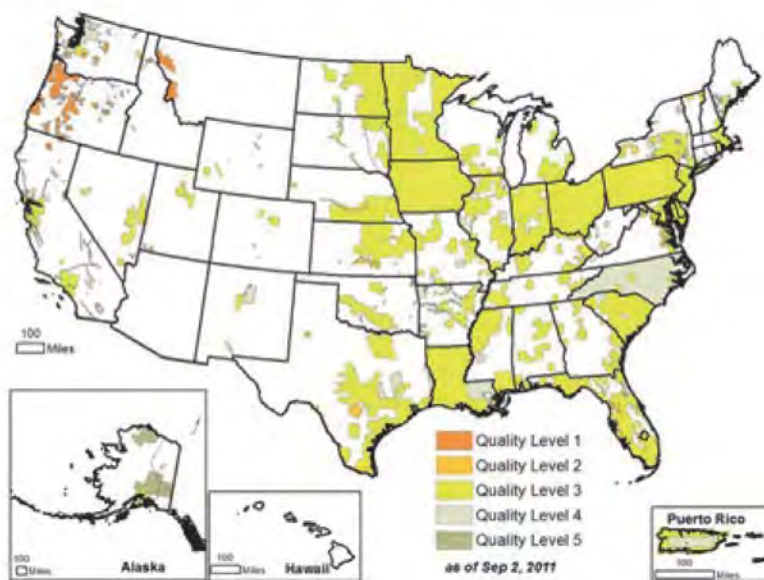


Metadata:
 Ellipsoïde : Clarke 1880.
 Projection : UTM
 Nickname Grid (UTM-WGS1984).
 Source: Aerial photography 1985 Scale 1/80 000

Appendix II-34: Tunisia - 1:50 000 mapping



Appendix II-35: USA - Alaska
INSAR coverage



Appendix II-36: USA -
Lidar coverage

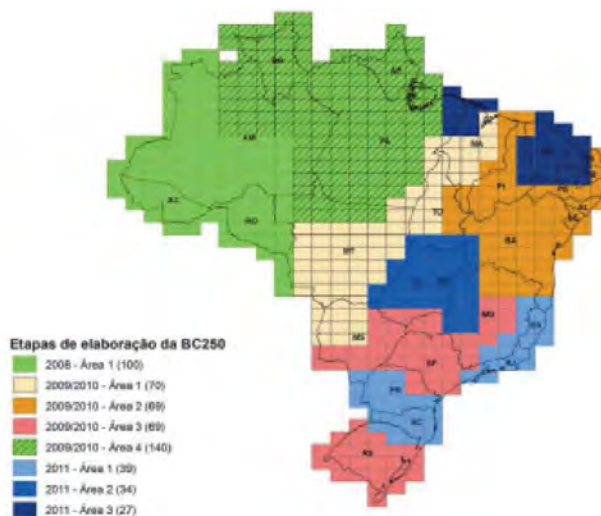


Appendix II-37: USA -
Topo updating of
24 000 year cycle

Appendix III Maps from the Internet

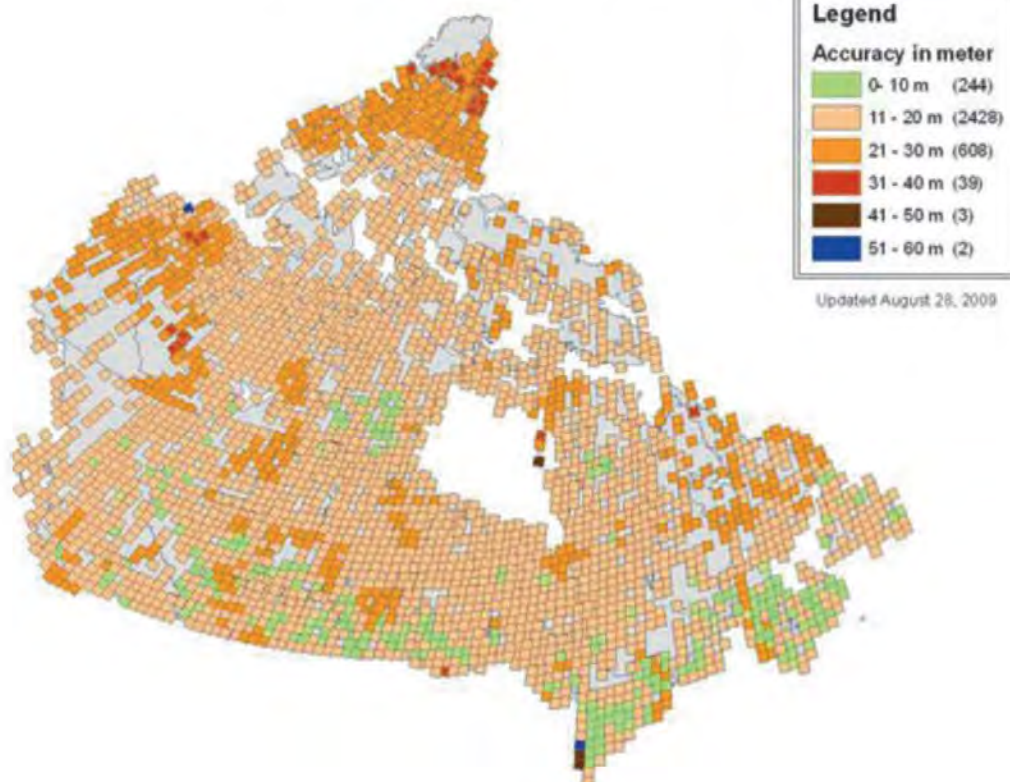


Appendix III-1: Brazil - Continuous coverage of 1:250 000 database



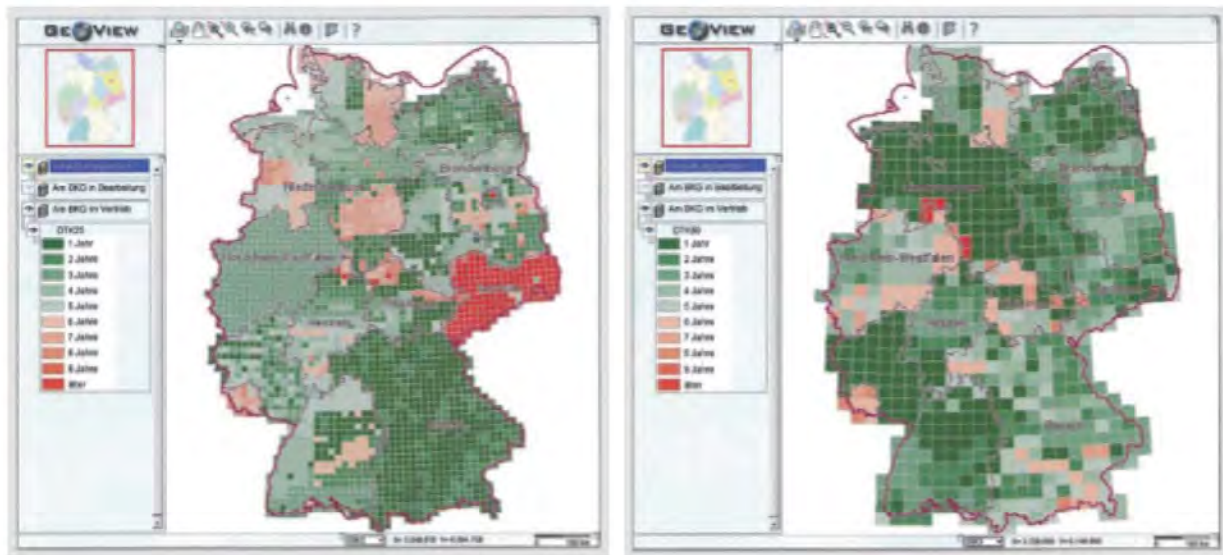
Appendix III-2: Brazil - Updating of 1:250 000 from 2008 to 2011

GeoBase Orthoimage 2005-2010 Accuracy



Appendix III-3: Canada - GeoBase orthoimagery (2005-2010), accuracy between 10-60m





Appendix III-6: Germany - Age of topo database 1:10 000 between 1 year (dark green) and 9 years (red)

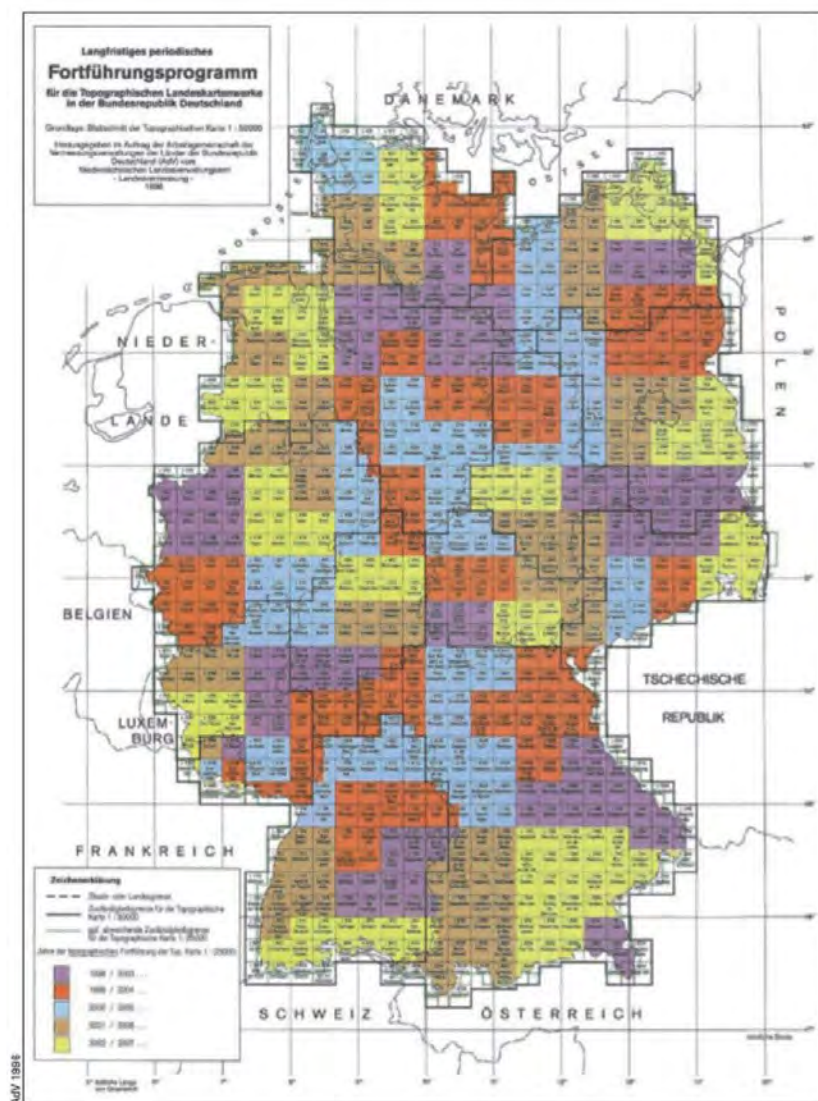
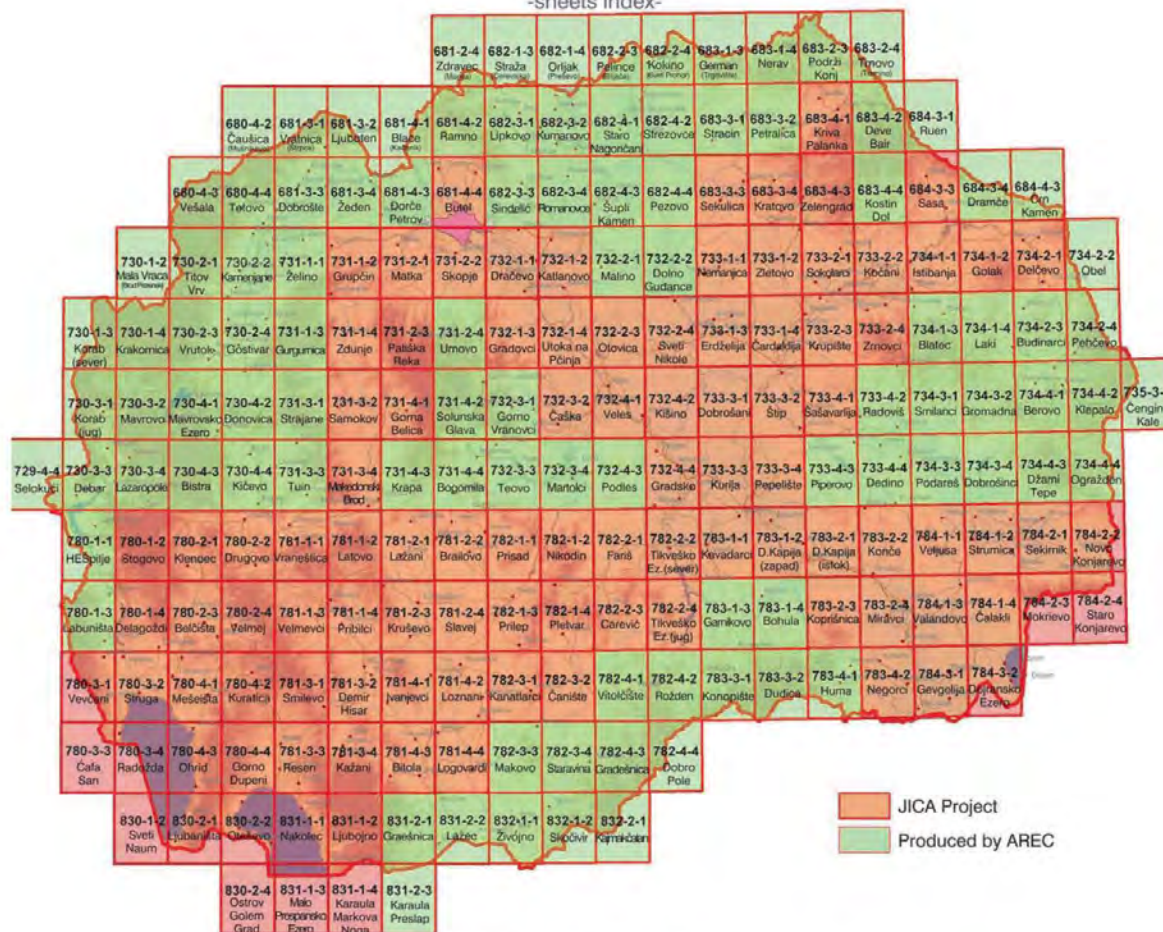


Abb. 1:
Historisches
»Langfristiges
periodisches
Fortführungs-
programm
für die Topo-
graphischen
Landeskarten-
werke«

Appendix III-7: Germany - Update cycle of 1:50 000 map sheets,
brown: 1996 - 2003 to yellow 2002 - 2007

TOPOGRAPHIC MAP OF THE REPUBLIC OF MACEDONIA
SCALE 1:25000
-sheets index-



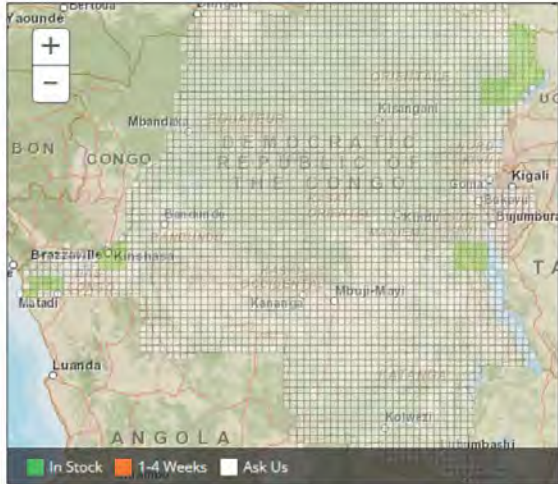
Appendix III-8: FYR Macedonia - 1:25 000 map coverage



Appendix III-9: New Zealand (North Island) -
1:50 000 mapping






Appendix III-10: New Zealand (South Island) -
1:50 000 mapping



Samples

Additional samples available upon request

Democratic Republic of the Congo IGN Series 1:50,000 Scale Topographic Maps

| Series | |
|--------------------|---|
| Series Name | Democratic Republic of the Congo IGN Series 1:50,000 Scale Topographic Maps |
| Inventory | This series contains 3,310 total products. |
| Type | Topographic Maps |
| Series Description | Congo (Kinshasa) 1:50,000. Institut Geographique du Congo Belge. Published: 1950s. Some printed in one, two or four colours and others issued as dye-lines. Projection: UTM; Datum Arc 1950, Spheroid Clark 1880. |
| Scale / Resolution | 1:50,000 |
| Publisher | Institut Geographique National |
| Published By | Congo, Democratic Republic of the [Kinshasa] |
| Published Date | 1950 (2), 1951 (23), 1954 (2), 1955 (4), 1970 (1) |
| Edition | --- |
| Language | French |
| Projection | Transverse Mercator |
| Countries Covered | Congo, Democratic Republic of the [Kinshasa] (3227), Angola (126), Zambia (81), Congo, Republic of the [Brazzaville] (66), Central African Republic (60), Burundi (41), Tanzania (37), Rwanda (30), Uganda (28), South Sudan (27), Sudan (21) |

Appendix III-11: Democratic Republic of the Congo 1:50,000 (IGN), example for a locally produced map series available at East View, screenshot geospatial.com



COUNTRY: SOMALIA

Soviet Military 1:100,000 Scale Topographic Maps

1,583 total products were found covering Somalia.

Next, select filters, series, and products from the sections below the map.

The most geographically extensive topographic map series at a large scale ever created. Coverage complete for Europe/former Soviet countries, very extensive for Asia, Middle East, and north Africa. Portions of North America, Caribbean, and Central America. Projection: Gauss-Krueger; Datum: Pulkovo 1942. Contours: typically 20m. Sheet extents: 20° latitude x 30° longitude from N60 degrees latitude to S60 degrees latitude; sheet extents merge as

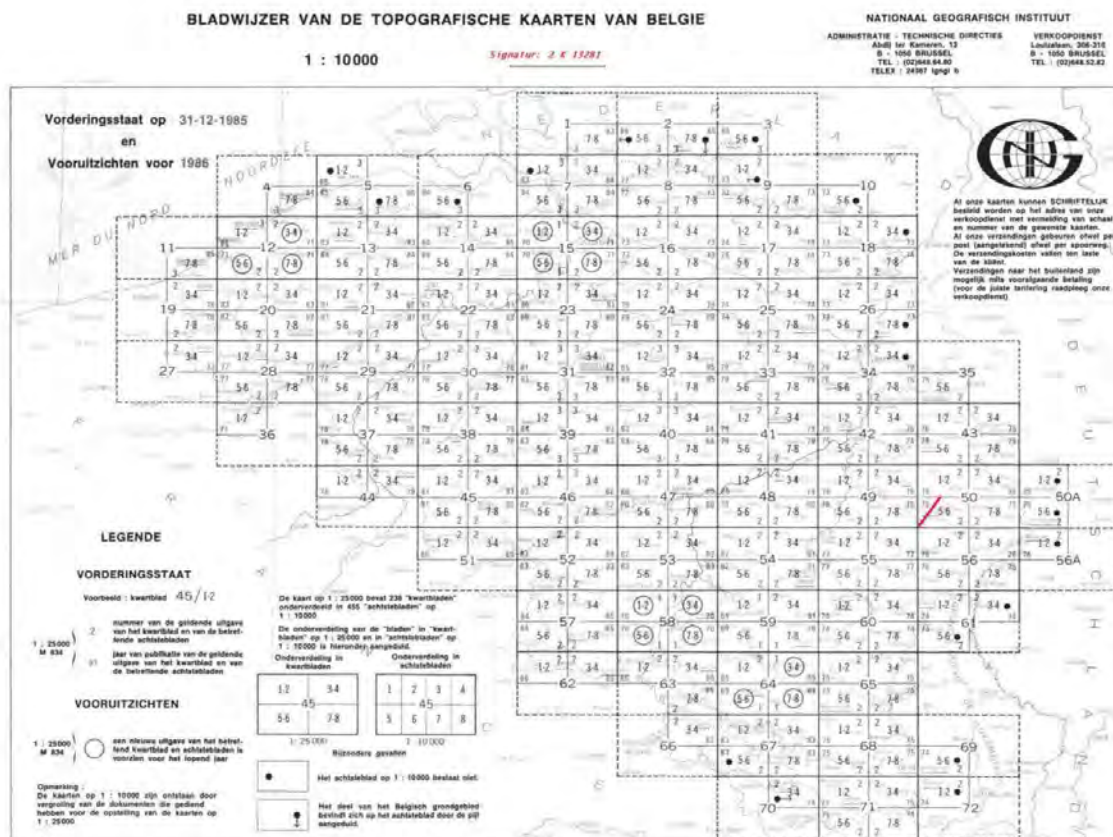
[View Series Information for Soviet Military 1:100,000 Scale Topographic Maps](#)

Questions? Need help?

[Contact Us](#)

Appendix III-12: Somalia 1:100,000 (Soviet Military), example for a military map series available at East View, screenshot geospatial.com

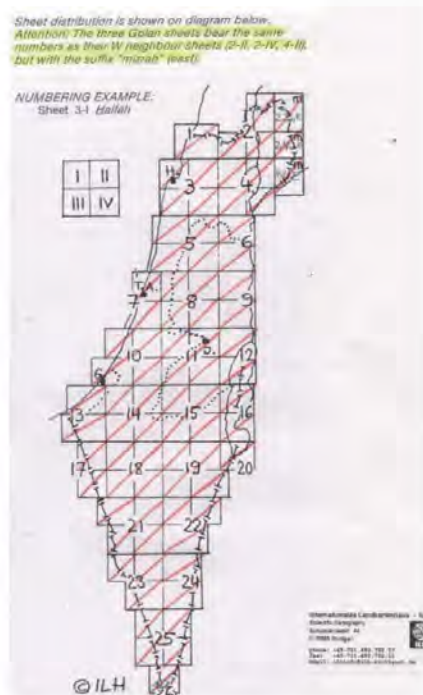
Appendix IV Maps from Staatsbibliothek Berlin



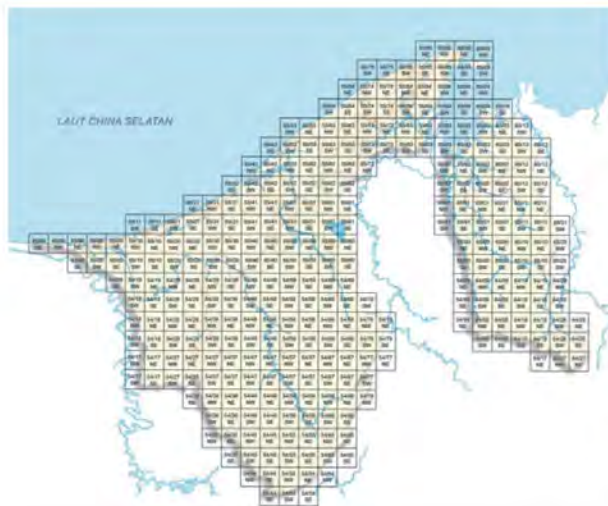
Appendix IV-1: Belgium - 1:10 000 mapping



Appendix IV-2: Belize - 1:250 000 mapping



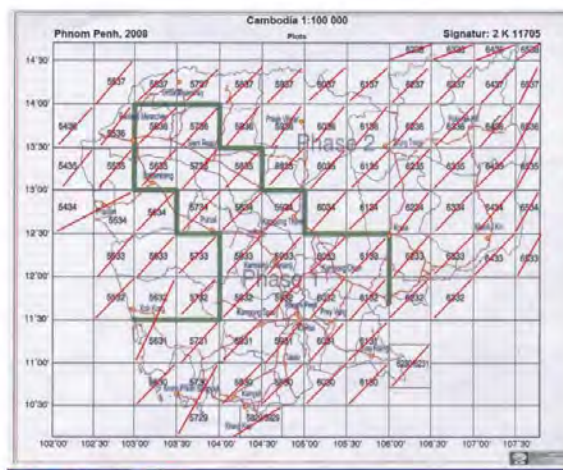
Appendix IV-3: Israel - 1:50 000 mapping



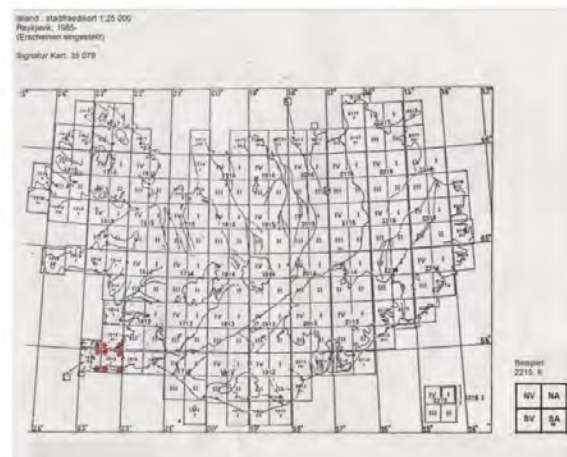
Appendix IV-4: Brunei -
1:10 000 mapping



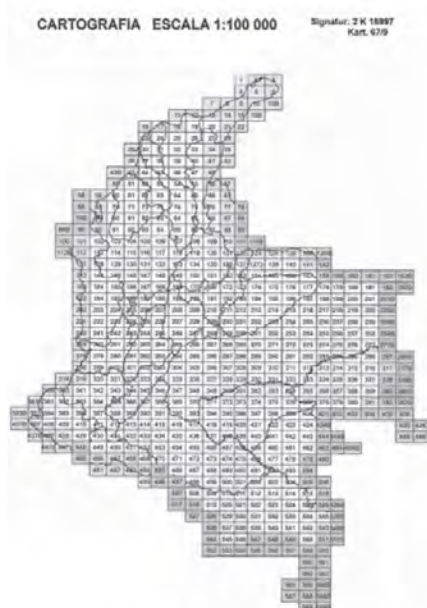
Appendix IV-5: France - Reunion
1:25 000 mapping



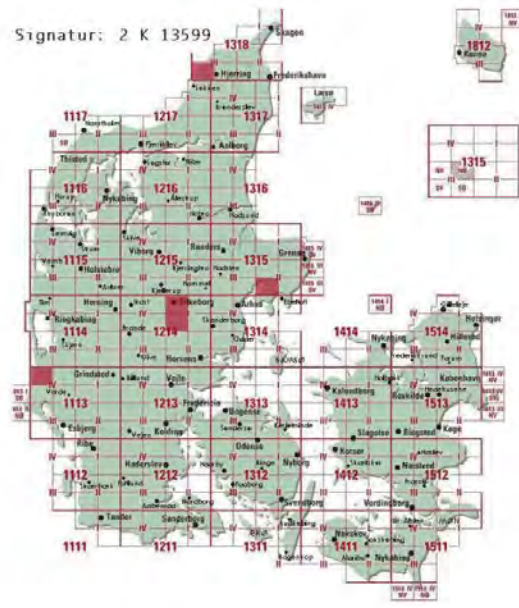
Appendix IV-6: Cambodia -
1:100 000 mapping



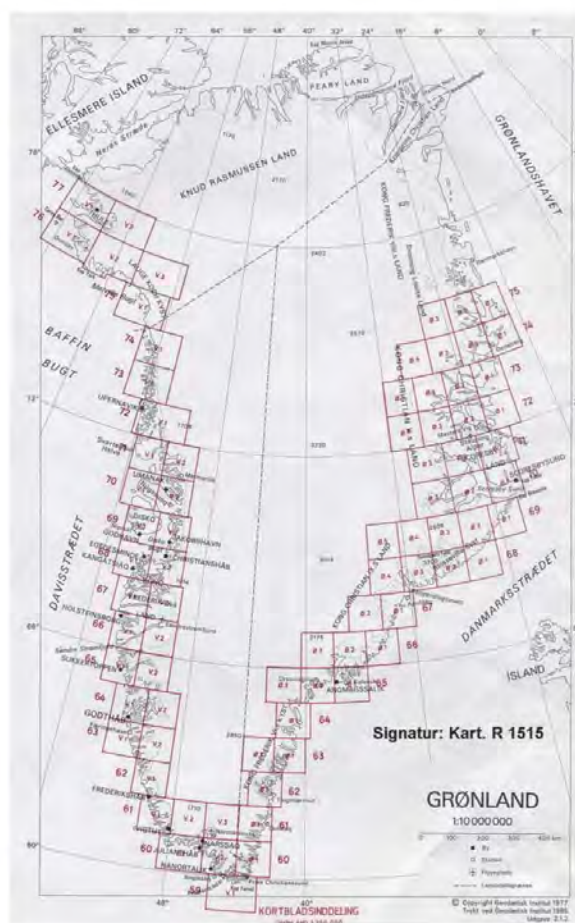
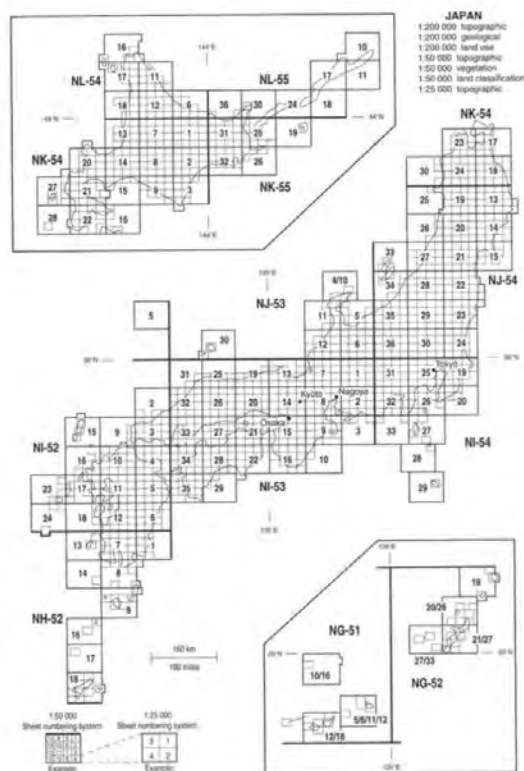
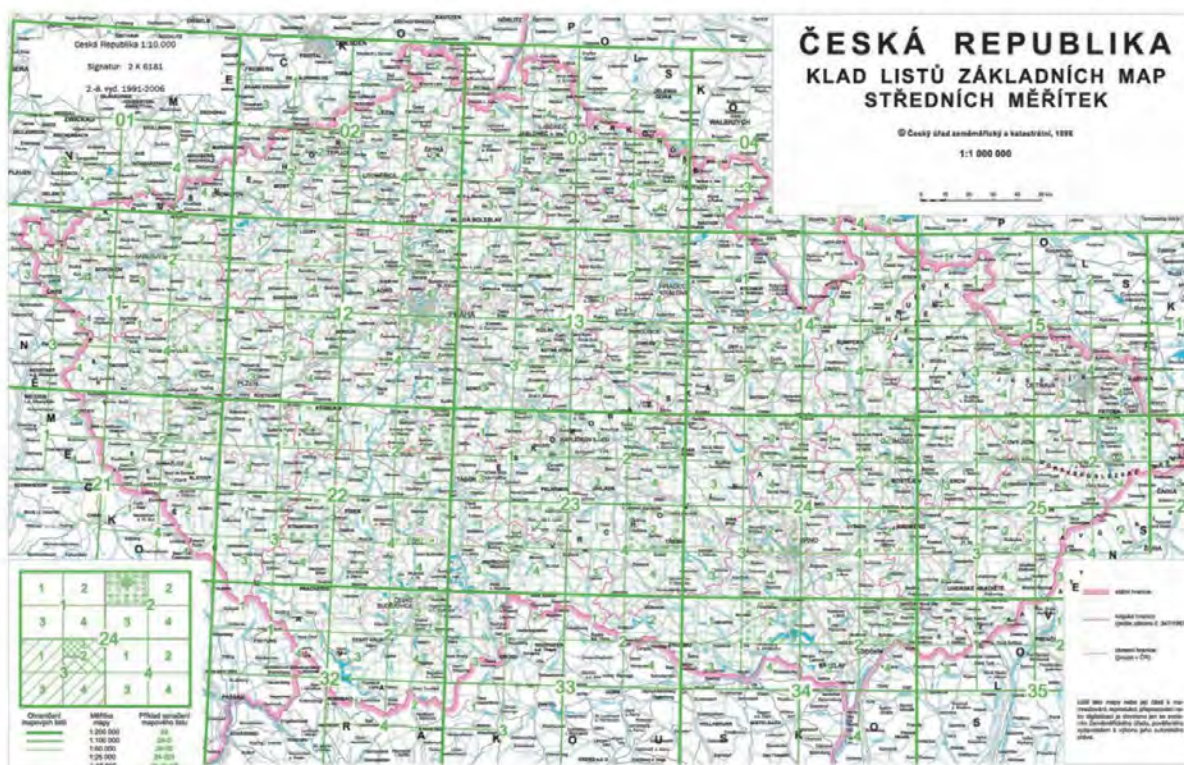
Appendix IV-7: Iceland 1985 -
1:25 000 mapping



Appendix IV-8: Colombia -
1:100 000 mapping



Appendix IV-9: Denmark -
1:25 000 mapping

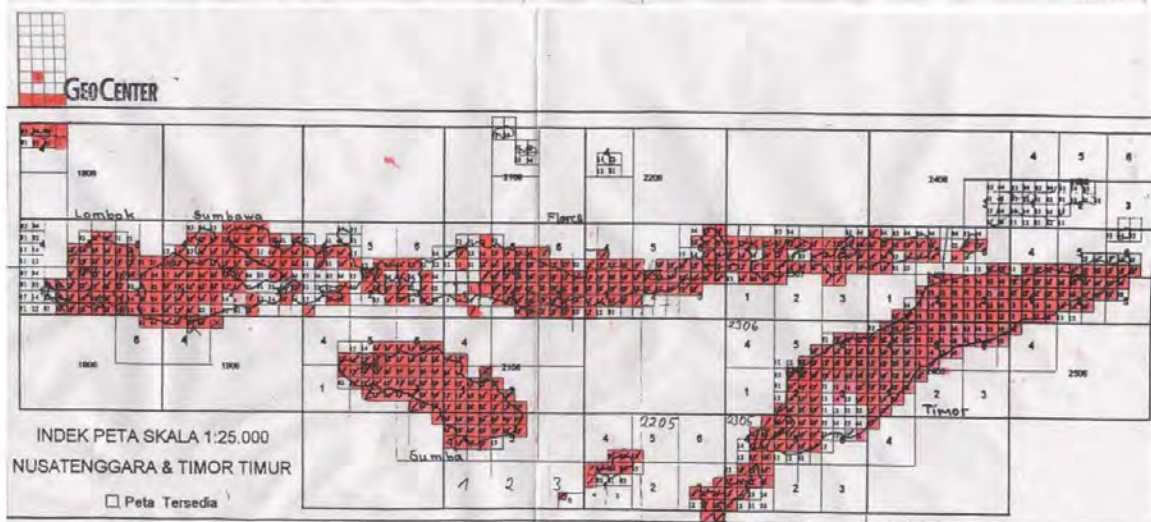
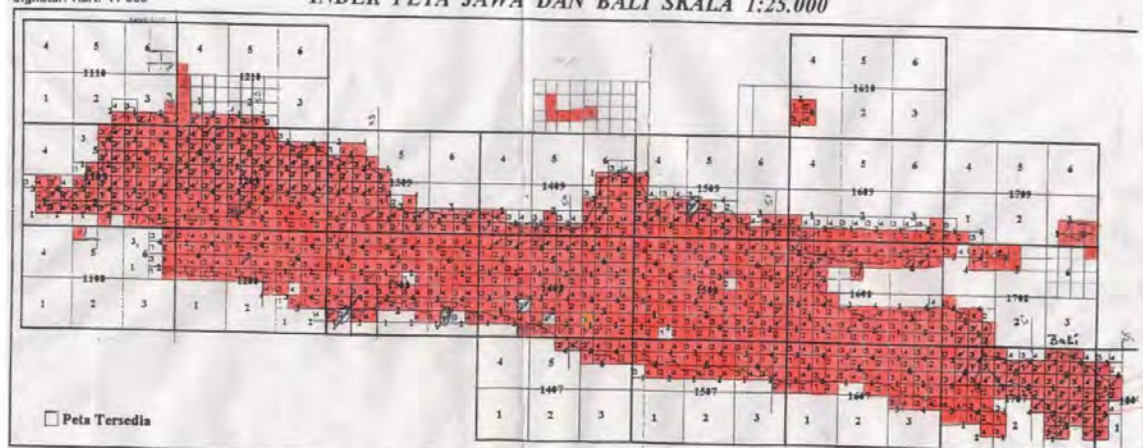




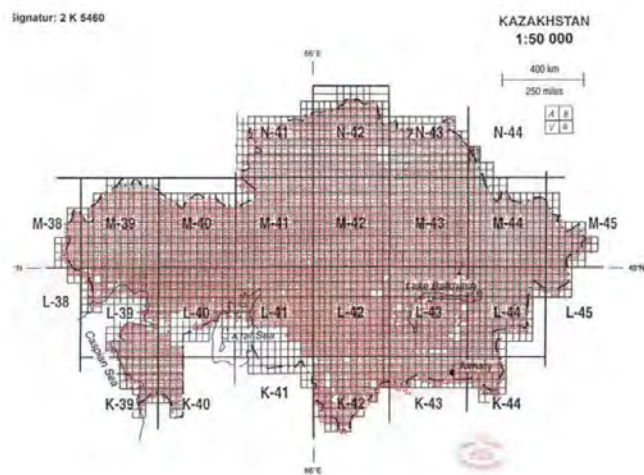
Appendix IV-13: Georgia - 1:50 000 mapping

Peta rupabumi Indonesia 1:25 000
Jakarta, 1969-
Signatur: Kart. 41 389

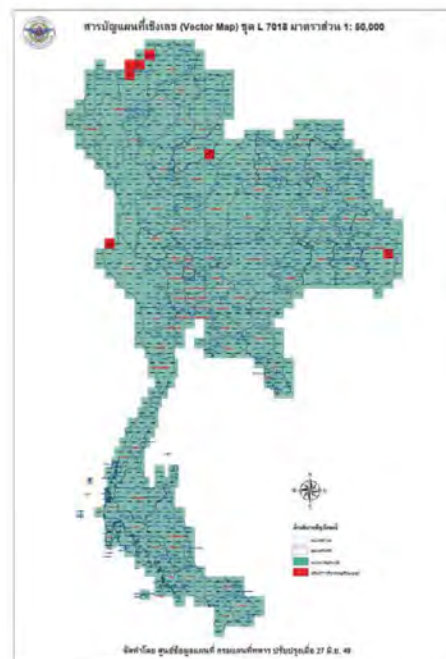
INDEK PETA JAWA DAN BALI SKALA 1:25.000



Appendix IV-14: Indonesia - 1:25 000 mapping of Java, Bali, Lombok and Timor



Appendix IV-17: Kazakhstan 1:50 000 mapping



Appendix IV-15: Thailand, 2006 - 1 - 50 000 mapping



Appendix IV-16: Yemen - 1:100 000 Mapping



Appendix IV-18: Iran 1:50 000 mapping



Appendix IV-19: Norway, Svalbard 1:250 000 mapping



Appendix IV-20: Germany -
1:50 000 mapping



Appendix IV-21: Portugal-Acores -
1:25 000 mapping



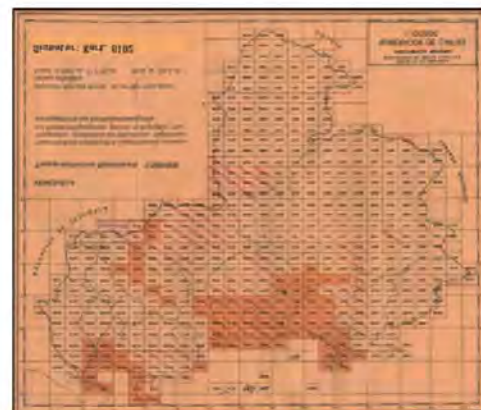
Appendix IV-22: Solomon Islands -
1:50 000 mapping



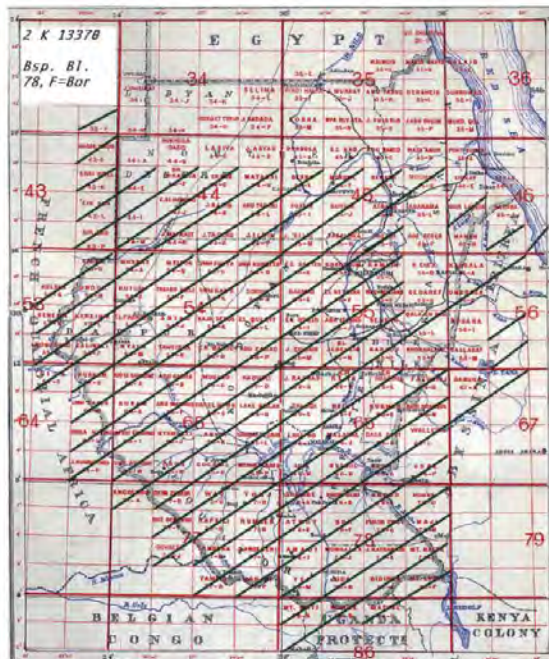
Appendix IV-23: Zimbabwe -
1:25 000 mapping



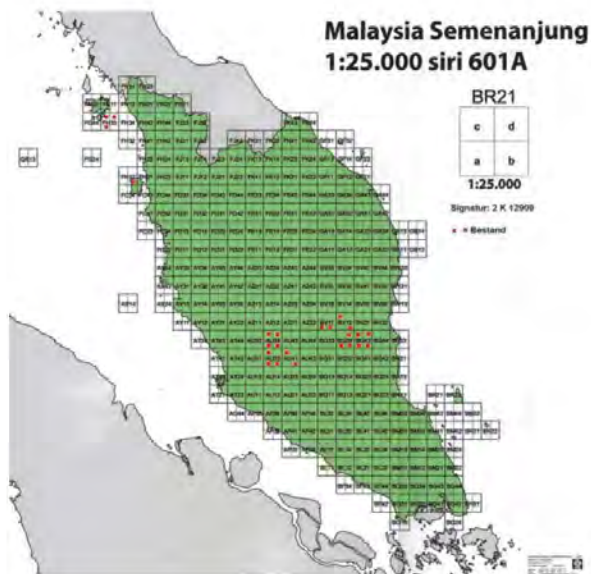
Appendix IV-24: Ukraine -
1:100 000 mapping



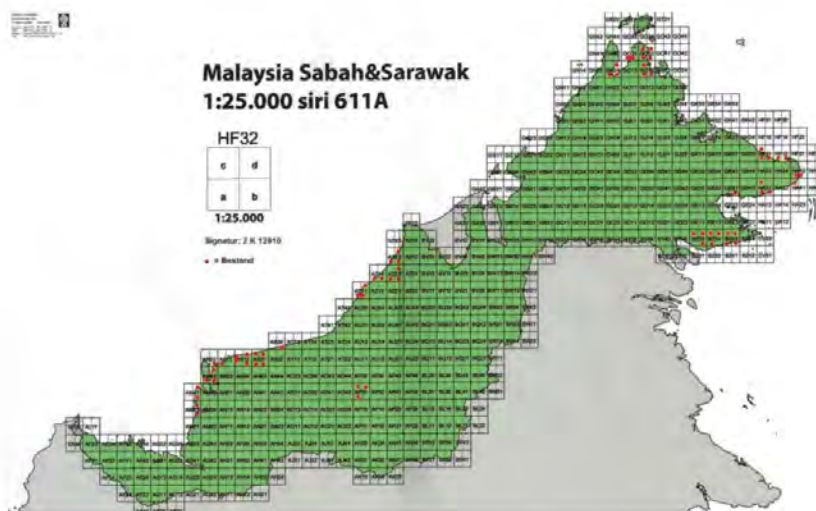
Appendix IV-25: Venezuela -
1:100 000 mapping



Appendix IV-26: Sudan -
1:200 000 mapping



Appendix IV-27: Malaysia -
1:25 000 mapping (Malacca)



Appendix IV-28: Malaysia -
1:25 000 mapping (Sabah &
Sarawak)

Various project results can be viewed online as an interactive map at:

<http://www.ipi.uni-hannover.de/StatusOfWorldMapping>

Declaration regarding content of this publication:

The designations employed and the presentation of country or area names in this list do not imply the expression of any opinion whatsoever on the part of the Secretariat of the United Nations as well as the ISPRS and the authors concerning the legal status of any country, territory, city or area or of its authorities, or concerning the delimitation of its frontiers or boundaries.

Moreover the map used for illustrations of project results (Fig. 1 - 39) is only for the purpose of reference and the boundaries are not authorized by any organizations.

The source of the vector map that was used for illustration is:

<http://www.naturalearthdata.com>



JOINT PROJECT

UNGGIM - ISPRS 2012 - 2015

*THE STATUS OF TOPOGRAPHIC MAPPING IN
THE WORLD*

FINAL REPORT AUGUST 2015

Authors:

- G. Konecny
- U. Breitkopf
- A. Radtke
- K. Lee

Leibniz Universität Hannover
Nienburger Str. 1
Hannover, 30167

GERMANY